



KANSAS GEOLOGICAL SOCIETY

# BULLETIN

Volume 92 Number 1

January-February 2017

Established 1925

## IN THIS ISSUE

*Honorary Member Profile  
Of Roger Martin - 11*

*KGF Cornerstone and  
Foundation News - 17*

**KGS Annual Banquet  
Honorary Member Roger Martin  
Friday January 27  
Petroleum Club of Wichita  
100 N. Broadway—9th Floor  
Social Hour: 5:30 PM-6:30 PM  
Dinner: 7:00 PM  
Program Following**



# THE TOTAL PACKAGE

www.dawson3d.com



MIDLAND 432-684-3000 | HOUSTON 713-917-6772  
OKLAHOMA CITY 405-848-7512 | DENVER 303-723-0440  
PLANO 972-881-1099 | CALGARY 403-263-7770

## Use Your KGS Library For All Your Printing Needs

Old photos?  
Old documents?  
We can scan them for you!



## THE RIGHT CHOICE FOR SEISMIC



SERCEL UNITE & INOVA HAWK CABLE-LESS SYSTEMS

CENTRALLY OWNED & OPERATED IN WICHITA, KS

AHV-IV COMMANDER 362/364 VIBS

HSE MANAGEMENT PROGRAM

SAFETY & QUALITY ORIENTED

PERMITTING SERVICES

3500 N. Rock Rd. Bldg. 800 Wichita, KS 67226

Phone: (316) 636-5552 Fax: (316) 636-5572 Website: [www.parangongeo.com](http://www.parangongeo.com)



## New TrueLog

MJ Systems High Quality Depth Registered Raster Image Well Logs  
**Directly Import** into popular Mapping and Cross-Section Applications

**IT'S FAST • IT'S EASY • NO SOFTWARE • APPLICATION READY**

**► ORDER ► DOWNLOAD ► DIRECT IMPORT ► OWN THE LOGS**

- No Long Term Contractual Obligations
- Never Have to Delete the Logs you Purchase

Search Catalog at [www.mjlogs.com](http://www.mjlogs.com)

Call 1-800-310-6451 or email [esales@mjlogs.com](mailto:esales@mjlogs.com)

Providing Well Logs since 1971



# Table of Contents

---

## Features

Honorary Member Profile of Roger Martin.....11

## Departments & Columns:

KGS Tech Talks .....4  
President's Letter ..... 7  
Advertiser's Directory .....8  
Professional Directory .....15 & 16  
Kansas Geological Foundation Cornerstone.....17  
Exploration Highlights .....20 & 21  
Kansas Geological Foundation Memorials.....22

## ON THE COVER:

*KGS Annual Banquet  
Honorary Membership for Roger Martin*

---

## CALL FOR PAPERS

The Kansas Geological Society Bulletin, which is published bimonthly both in hard-copy and electronic format, seeks short papers dealing with any aspect of Kansas geology, including petroleum geology, studies of producing oil or gas fields, and outcrop or conceptual studies. Maximum printed length of papers is 5 pages as they appear in the Bulletin, including text, references, figures and/or tables, and figure/table captions. Inquiries regarding manuscripts should be sent to [manager@kgslibrary.com](mailto:manager@kgslibrary.com) or mailed to 212 N. Market, Ste. 100, Wichita, KS 67202. Specific guidelines for manuscript submission appear in each issue of the Bulletin, which can also be accessed on-line at the Kansas Geological Society web site at <http://www.kgslibrary.com>

# SOCIETY Technical Meetings

## KGS 2016 Technical Talks

January 03 - *"Proterozoic Dogmas Revisited: Exploration Potential of Proterozoic Systems"* - This will be a film Presentation

January 17 - *"Disaster! Fire, Storms & Other Catastrophes in the Early Kansas Oilfields"* - Ardath Lawson Kansas Oil Museum

January 24 - *Field Studies - KU Petroleum Class Dr. Tony Walton*

February 07 - *"Oil Men - Tales From the South Texas Oil Patch"* - This will be a film presentation

February 21 - *"The Tri-State Mining District - A Tale of the Beguiling Mississippian"* - Leah Kasten, Geologist, CMX, Inc.

March 07 - *"James Hutton : Deep Time" - "William Smith and the Map that Changed the World"* - This will be a film presentation

Please remember to check the website for the most up to date information on Technical Talks  
<http://www.kgslibrary.com/techtalks.cfm>

*Tech Talks are held at Landmark Square  
212 N. Market—4th floor  
In the Wisdom Center*



*Note: For those geologists who need 30 points to renew their licenses, there will be a sign-in sheet at each presentation and also a certificate of attendance.*

# KANSAS GEOLOGICAL SOCIETY



## BOARD OF DIRECTORS

---

### PRESIDENT

Paul Ramondetta

### PRESIDENT-ELECT

Beth Isern

### SECRETARY

Ken Dean

### TREASURER

Wesley Hansen

### DIRECTORS

Tim Hellman

Toby Eck

Rocky Milford

### ADVISORS

David Clothier

Curtis Covey

## COMMITTEE CHAIRMEN

---

### Advertising

### Advisory

### Annual Banquet

### Budget Committee

### Bulletin

### Continuing Education

### Distinguished Awards

### Environmental

### Field Trip

### Fishing Tournament

### Future Plans

### Golf

### Historian

### Investment

### Library

### Membership

### Nomenclature

### Picnic

### Public Relations

### Shooting Tournament

### Technical Program

Kent Scribner

Dave Clothier

Curtis Covey

Doug Davis

Chuck Brewer

Wesley Hansen

Dave Clothier

Tim Hellman

Kent Matson

Larry Skelton

Randy Teter

Chuck Brewer

David Barker

Larry Skelton

Chuck Brewer

Ted Jochems

Larry Friend

John H. Morrison, III

Wes Hansen

Larry Richardson

Dave Clothier

## A.A.P.G. DELEGATES

---

Ernie Morrison  
2018

Douglas Davis  
2018

## BULLETIN STAFF

---

### EDITORS

Ernie Morrison

(316) 264-6366

Wes Hansen

(316) 772-6188

### ADVERTISING

Kent Scribner

Stelbar Oil Corp.

(316) 264-8378

### PROFILES/MEMORIALS

Robert Cowdery

### EXPLORATION HIGHLIGHTS

John H. Morrison, III

Independent O&G

(316) 263-8281

### STATE SURVEY

KS Geological Survey

(785) 864-3965

### SOCIETY NEWS

KGS Library

(316) 265-8676

### EDITOR EMERITUS

Wes Hansen

(316) 772-6188

Larry Richardson

(316) 262-8427

## K.G.S. LIBRARY

---

PHONE 316-265-8676 FAX 316-265-1013

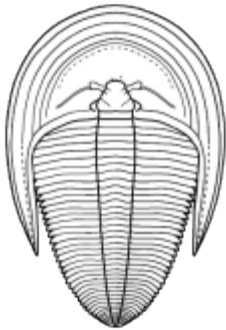
email: [frontdesk@kgslibrary.com](mailto:frontdesk@kgslibrary.com) or

Web: [www.kgslibrary.com](http://www.kgslibrary.com)

The KGS *Bulletin* is published bi-monthly by the Kansas Geological Society, with offices at 212 North Market, Wichita, Kansas 67202 Copyright 2016, The Kansas Geological Society. The purpose of the *Bulletin* is to keep members informed of the activities of the Society and to encourage the exchange and dissemination of technical information related to the Geological profession. Subscription to the *Bulletin* is by membership in the Kansas Geological Society. Limited permission is hereby given by the KGS to photocopy any material appearing in the *KGS BULLETIN* for the non-commercial purpose of scientific or educational advancement. The KGS, a scientific society, neither adopts nor supports positions of advocacy, we provide this and other forums for the presentation of diverse opinions and positions. Opinions presented in these publications do not reflect official positions of the Society.



Twenty-two Trucks Serving  
 Kansas—Colorado—Texas—Nebraska—Illinois  
 DST's  
 Back Pressure testing (G1 & G2)  
 Slick line services using the same Weatherford  
 Electronic Pressure Gauges used on DST's



1-800-728-5369  
 FAX 1-785-625-5620

www.trilobitetesting.com  
 trilobite@eaglecom.net

SHOPS LOCATED IN:  
 Hays, KS  
 Scott City, KS  
 Pratt, KS  
 Hugoton, KS  
 Oberlin, KS  
 Clay City, IL

## CAN YOU NAME THE CRITTER?

Sponsored by Trilobite Testing, Inc.

Is your paleo up to date?

If you know the name of the trilobite,  
 submit your guess via e-mail to  
 manager@kgslibrary.com

Remember that *Trilobite Testing* is  
 sponsoring your efforts, so be sure to thank  
 Paul Simpson the next time you see him.

**CONGRATULATIONS!!**  
**Tom Dudgeon correctly identified**  
**The last one as: Lermontovia**

Bulletin committee members and PhD's in  
 Paleontology are prohibited from entering.



UNIVERSITY OF KANSAS Franklin D. Murphy, M.D., Chancellor STATE OF KANSAS George Docking, Governor MINERAL INDUSTRIES COUNCIL B. O. Weaver ('77), Chairman R. A. Spencer ('77) W. L. Stryker ('77) Howard Carey ('78) Simon S. Clark ('81) Lee H. Cornell ('81) Brian O'Brien ('79), Vice Chairman E. J. Jungmann ('81) George K. Mackie, Jr. ('59) Charles Cook ('60) Dana Hansen ('60) Joe E. Donham ('60)	<h2 style="margin: 0;">THE SURFACE FEATURES OF KANSAS</h2> <p style="margin: 0; font-size: x-small;">By RAYMOND C. MOORE</p>	STATE GEOLOGICAL SURVEY Frank C. Foley, Ph.D., State Geologist and Director William W. Hambleton, Ph.D., Assistant State Geologist and Assistant Director Raymond C. Moore, Ph.D., Sc.D., Principal Geologist STATE BOARD OF REGENTS A. W. Henshberger, Chairman Merrill Bond Claude C. Bradney Ray Evans Clement H. Hill Mrs. Leo Harghey Lawrence Margus Oscar Stadler Harry Valentine
--------------------------------------------------------------------------------------------------------------------------------------------------------------------------------------------------------------------------------------------------------------------------------------------------------------------------------------------------------------------------------------------------------------------------------------------------------------	------------------------------------------------------------------------------------------------------------------------------	------------------------------------------------------------------------------------------------------------------------------------------------------------------------------------------------------------------------------------------------------------------------------------------------------------------------------------------------------------------------------------------------------------------------------------

Get Your Maps copied at the KGS library

We can scan, copy, and print up to 44" wide

Color or Black & White

Solid Color @ \$4.00/sq. ft.

Line maps with color @ \$3.00/sq. ft.

# President's Letter

Greetings and Happy New Year to all KGS Members!

This great and venerable institution has survived much since its founding in 1925. I attribute its success and longevity to a deep seated spirit of optimism so inherent within the geological psyche that we all possess. Surely, a soul capable of delving into the depths of geological time can persevere against the ripples of mere business cycles... easier said than done you say. Our past is littered with countless crises that have come and gone, horrific at the time, but now be forgotten and never brought to mind.

This society is a community of people, a family of members and employees, binding itself together during times of crisis, and refraining from the vitriol that is now all too common in the culture of the day. The familiar faces we see year after year are the backbone of this society, and provide a basis for stability during both prosperous and poor times.

At the moment, we are financially strong... no debt and over a million dollars in the bank, same as a year ago. Trying to predict the future is a fool's errand, but recent upturns in drilling activity do give some cause for optimism. The society's net income is better at year end than it has been for some time. It is therefore vital that we gird ourselves for a busy 2017, making sure that the library will be strong and up to the task. Our large and complex collection of data, paper and digital, will not run by itself if business picks up, and we must be ready for it... to have the faith to persevere.

My hope for 2017 is for a healing process, smoothing over the rough edges, and to further enrich our collection and service to the public. A leader must strive to serve, not be served.

May this Christmas holiday season bring you blessings beyond expectation!



Kansas State University  
**DEPARTMENT OF GEOLOGY**

Graduate education for active professionals in this innovative program, workshops, site visits and distance courses help professionals advance in their careers. Whether your goal is to receive academic credit, certifications or a master's degree in geology, you'll find a path that leads to your career goals.

**CHOOSE FROM SPECIALIZATIONS IN:**

- ▶ Petroleum geology
- ▶ Environmental geochemistry
- ▶ Structural Geology
- ▶ Groundwater
- ▶ Exploration geophysics
- ▶ Geomicrobiology

**LEARN MORE**

Contact Pamela Kempton, department head, for more information at [pkempton@k-state.edu](mailto:pkempton@k-state.edu). Or contact any of our program partners to learn more.

*K-State Global Campus: [dce.k-state.edu](http://dce.k-state.edu)  
 Geology department: [k-state.edu/geology](http://k-state.edu/geology)  
 Graduate School: [k-state.edu/grad](http://k-state.edu/grad)*



Log in to  
 Walters Digital Library  
 At  
[www.kgslibrary.com](http://www.kgslibrary.com)

Log in as our guest  
 and see the Society's Database  
 A convenient way to see what  
 you might want to order!  
 Call or email your order to:  
 316-265-8676  
[frontdesk@kgslibrary.com](mailto:frontdesk@kgslibrary.com)

**ADVERTISER'S DIRECTORY**

	<i>page</i>
Allied Cementing Company, Inc	23
Dawson Geophysical Company	2
Duke Drilling	23
GeoSteering	11
Kansas Geological Foundation	18
Kansas State University	8
Lockhart Geophysical	23
MJ Systems	2
Murfin Drilling Company, Inc	23
PARAGON Geophysical Services, Inc	2
Professional Directory	15-16
Trilobite Testing	6
Walters Digital Library	9
Well Enhancement Services, LLC	11

**ADVERTISER'S RATES: 2017**

<b>Full Page</b>	<b>B&amp;W</b>	<b>Color</b>
6 issues	\$2,000	\$2,500
3 issues	\$1,080	\$1,325
1 issue	\$480	\$525
<b>1/2 Page</b>		
6 issues	\$1,000	\$1,500
3 issues	\$540	\$825
1 issue	\$225	\$350
<b>1/4 Page</b>		
6 issues	\$600	\$900
3 issues	\$325	\$525
1 issue	\$150	\$250
<b>1/8 Page</b>		
6 issues	\$300	\$500
3 issues	\$175	\$325
1 issue	\$75	\$185
<b>Professional Ad (Business Card)</b>		
6 issues	\$90	\$180

*For one-time ads, call Kent Scribner at 316-264-8378*



UNIVERSITY OF KANSAS STATE OF KANSAS  
 Franklin D. Murphy, M.D., Chancellor George Docking, Governor

MINERAL INDUSTRIES COUNCIL  
 E. O. Weaver ('57), Chairman E. J. Langman ('55), Vice-Chairman  
 K. A. Spencer ('77) George K. Mackie, Jr. ('59)  
 W. L. Stryker ('77) Chester Cook ('60)  
 Howard Gentry ('91) Dan Hansen ('60)  
 Susan S. Clarke ('81) Joe E. Dosham ('60)  
 Lee H. Cornell ('93)

STATE GEOLOGICAL SURVEY  
 Frank C. Foley, Ph.D., State Geologist and Director  
 William W. Hamblin, Ph.D., Assistant State Geologist  
 and Assistant Director  
 Raymond C. Moore, Ph.D., S.D., Principal Geologist

STATE BOARD OF REGENTS  
 A. W. Henshberger, Chairman  
 McDill Boyd  
 Classic C. Bradley  
 Roy Evans  
 Clement H. Hall

Mr. Leo Harghey  
 Lawrence Morgan  
 Oscar Stauffer  
 Harry Valentine

## THE SURFACE FEATURES OF KANSAS

By RAYMOND C. MOORE

**Get Your Maps copied at the KGS library**

**We can scan, copy, and print up to 44" wide**

**Color or Black & White**

**Solid Color @ \$4.00/sq. ft.**

**Line maps with color @ \$3.00/sq. ft.**

Tertiary HIGH PLAINS Cretaceous BLUE HILLS UPLAND Permian SMOKY HILLS UPLAND Pennsylvanian FLINT HILLS MISSISSIPPIAN OSAGE PLAINS Devonian and Carboniferous Precambrian

# Robert F. Walters Digital Library

**Log in as our Guest**

**username: guest**

**password: guest**

**316-265-8676**



**Let Us Print Your Geo Reports  
 And Save Your Time For Finding More Oil & Gas  
 Top Quality Color Printing For Our Membership**

**Email your files to: [kgsorders@gmail.com](mailto:kgsorders@gmail.com)**

## WOULD YOU LIKE TO INCREASE YOUR PRODUCTION AT A FRACTION OF THE COST OF HORIZONTAL DRILLING?



**Well Enhancement Services, LLC** is jetting laterals utilizing new technology and coiled tubing. We now have the ability to place hundreds of gallons of acid hundreds of feet away from the well bore. This allows us to not only enhance existing production but to produce reserves previously unreachable. It has established itself by repeatedly increasing production in both new and existing wells. Contact us for more information, questions or to schedule your next well with **WES**.



### Please Contact Us:

Phone: (785) 625-5155

Fax: (785) 625-4151

Field: (785) 259-4638

wesofhays@hotmail.com  
Box 87, Schoenchen, KS 67667

*“Tap into success....with WES”*

www.**GeoSteering**.com

281-573-0500

info@geosteering.com

**Free introductory consultation with modeling: let us demonstrate whether images or propagation resistivity could add value to your well.**

**Personnel with degrees & 20+ years of oilfield experience**

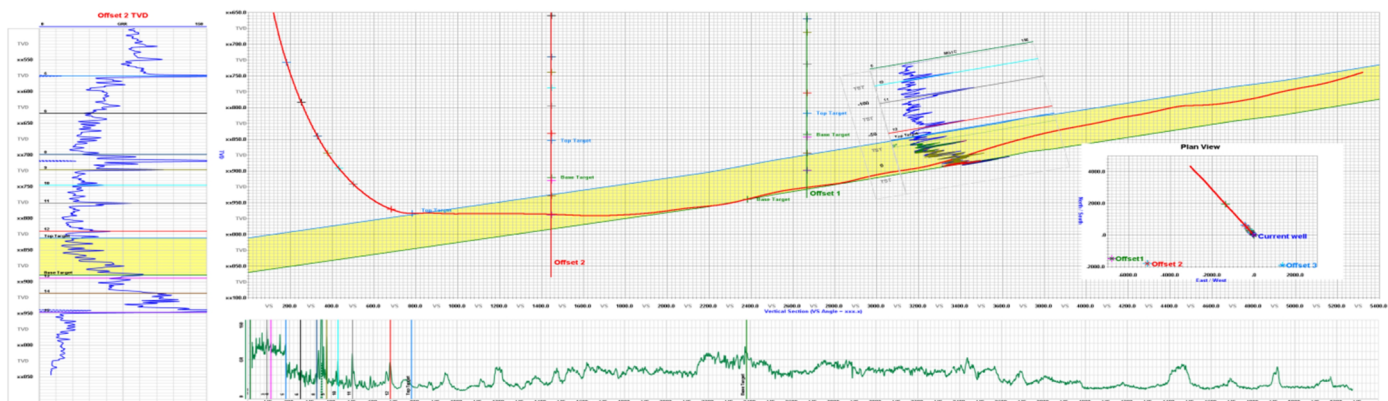
**Proprietary software**

**TST interpretation for GR only jobs**

**Image displays / interpretation for jobs with azimuthal GR, resistivity or density**

**Resistivity modelling / interpretation for jobs with LWD propagation resistivity**

**Real-time (always)**



# Honorary Member Profile

## Roger Martin

Roger was born in 1955 in Wichita, Kansas. He grew up in Wichita; his parents Robert (Bob) Martin and Anne Z. Martin, were originally from the Kansas City area. Roger has a brother, Marshall, and a sister, Carrie. His father, Robert Martin was an attorney that practiced law in the oil and gas industry. Roger attended Kos Harris Elementary School and Coleman Junior High in Wichita. He graduated from Wichita Southeast High School. Roger went on to graduate in 1979 from University of Kansas with a B.S. degree in geology, plus some graduate level work. His most influential professors were Ed Zeller who taught geology, but also had PhD's in physics and astronomy; and Professor Mike Brady. He remembers geologists Kent Crisler, Kris Kennedy, Matt Totten, and Bryce Bidleman among his geology friends at KU. They all attended field camp together. He chose geology for a major because he was influenced by friends of his dad like J. A. Mull and James F. Ralstin, who Roger admired as outdoorsmen and who made a good living. His dad had told him if he wasn't a lawyer he would have been a geologist; as he had become quite familiar with geology by having had geologists on the witness stand for about 50 years. His current family includes his adopted son Dakota Martin, and his dogs. Roger is a member of the Kansas Geological Society (KGS), Kansas Geological Foundation (KGF), Society of Independent Professional Earth Scientists (SIPES), and American Association of Petroleum Geologists (AAPG). He was a National Vice President of the SIPES. He has served as President of the Kansas Geological Society and Kansas Geological Foundation. He served on the KGF and KGS boards for 10 consecutive years, and he has served as co-chairman of the KGS Library Committee for about 15 years.

He began work in the oil industry in 1976 by working for DNB Drilling as a roughneck while a student at K.U. during summers and Christmas breaks. Then he worked as a geologist between 1979 and 1981 at Mull Drilling Company. Thereafter he became an independent.

The first wells he watched were in Kansas, but some of the most challenging wells were in Eastern Colorado, such as in the Sorrento Field and the discovery of the Clifford Field. His most challenging well recently, was a horizontal well, drilled laterally under a sink hole in the Arbuckle Group, in the Bemis–Shutts Field, in Ellis County, Kansas.

The biggest characters he has met, that have had a major influence on his profession, were Albert Abercrombie, J. A. Mull, Jim Ralstin, and Jim Donelson.

Roger is a licensed coach of amateur and professional boxing, and an MMA striking coach. He still practices boxing, along with Jujitsu, judo, kick boxing, MMA, and Krav Maga, at Valor Martial Arts and some other MMA gyms.

Having been a professional geologist for almost 38 years, and if asked if he would do it all over, he said “on most days, YES!” For his future goals, Roger aims to practice geology as long as he can. After his retirement as a professional geologist, he jokes that his goal is to take on MMA cage fights at 65 or 70 years of age.


# PROFESSIONAL DIRECTORY

**Kirk Rundle**  
**Consulting Geophysicist**  
 3D Seismic Design, Acquisition to Processing QC.,  
 Interpretation and Analysis, Subsurface Integration  
 7340 W. 21st. N., Ste. 100  
 Wichita, Kansas 67205  
 Office: 316-721-1421 Fax: 316-721-1843  
 Email: [kirk@rundlegeo.com](mailto:kirk@rundlegeo.com)

**ROGER L. MARTIN**  
*Independent Petroleum Geologist*  
 200 E 1st St, Ste 405, Wichita, KS 67202  
 Cell: 316-833-2722 Office: 316-250-6970  
 KS Field Cell: 316-655-1227  
 Fax: 316-425-3829  
 Email: [rogermartingeo@yahoo.com](mailto:rogermartingeo@yahoo.com)

**Blue Ribbon Drilling, LLC**  
 PO Box 279, Dewey, OK 74029  
 Phone and Fax: 918-534-2322  
 John's Cell Phone: 918-440-9639  
 Larry's Cell Phone: 918-440-9638  
 Jeff's Cell Phone: 918-440-9647  
 Email: [johnroutree@bratco-operating.com](mailto:johnroutree@bratco-operating.com)

**ALFRED JAMES III**  
**Petroleum Geologist**  
 Kansas - Colorado - Utah  
 4912 E. 29th St. N., Ste. 3, Wichita, Kansas 67220  
 SIPES # 1111  
 Office (316) 267-7592  
[james.alfred21@yahoo.com](mailto:james.alfred21@yahoo.com)




**Scott Banks**  
*Petroleum Geologist*  
[banksbs@aol.com](mailto:banksbs@aol.com)  
 Cell: 316.253.8550  
 1700 N. Waterfront Pkwy.  
 Bldg. 300 • Suite C  
 Wichita, KS 67206  
 Phone: 316.558.5262  
 Fax: 316.558.5263

*Banks Resources*

**M. (Bradford) Rine, Geologist**  
*Licensed, Registered, Certified*  
 PROSPECT EVALUATION PROSPECT ORIENTATION  
 WELLSITE SUPERVISION DRLG/COMPL CONSULTATION  
 RESERVOIR STUDIES PROPERTY EVALUATION  
 EXPERT TESTIMONY BANJO PICKER  
 100 South Main  
 Suite #415  
 Wichita, Kansas 67202  
 Email: [rinemb@sbcglobal.net](mailto:rinemb@sbcglobal.net)  
 Office & Cell: (316) 250-5941

**WESLEY D. HANSEN**  
**Consulting Geologist**  
 Well site Supervision • Geologic Studies  
 212 N. Market, Ste 257  
 Wichita, Kansas 67202  
 Office/Mobile: ( 316) 772-6188  
[whansen4651@sbcglobal.net](mailto:whansen4651@sbcglobal.net)  
 35 Continuous Years in the Kansas Oil Patch

**Your business card ad  
 Could be right here  
 For only \$90/year**



**KEVIN L. KESSLER**  
 INDEPENDENT/CONSULTING PETROLEUM GEOLOGIST  
 WELLSITE SUPERVISION • GEOLOGIC RESEARCH  
 OIL & GAS PROSPECTS  
 KANSAS & EASTERN COLORADO  
 MAILING ADDRESS PHONE  
 1199 N. PONDEROSA RD. RES.: (316) 522-7338  
 BELLE PLAINE, KS 67013 MOBILE: (316) 706-6636  
 EMAIL: [KKESSLER1199@AOL.COM](mailto:KKESSLER1199@AOL.COM)

**MELLAND ENGINEERING, INC.**  
*Petroleum Engineering & Geological Consulting*  
**James E. Melland, P.E., P.G.**  
 President  
 Office: (620) 241-4621 Fax: (620) 241-2621  
[jamesm@mellandengineering.com](mailto:jamesm@mellandengineering.com)  
[www.mellandengineering.com](http://www.mellandengineering.com)  
 P.O. Box 841, McPherson, KS 67460

**Your business card ad  
 Could be right here  
 For only \$90/year**

**WOW**  
**CHEESESTEAKS**  
 AND HOAGIES  
 803 NORTH WEST STREET  
 WICHITA, KANSAS - 67203  
 (316) 491-1239  
 CALL OR COME IN - SEATING INSIDE  
[www.wowcheesesteaks.com](http://www.wowcheesesteaks.com)

**Covey** — *The Well Watchers*

*"One Thousand Wells and Counting"*

**Curtis E. Covey**      **Wellsite Petroleum Geologist**

Gas Trailer Cell: 316-217-4679  
Email: wellsitgeo1@gmail.com

Office: 316-776-0367  
6548 Bedford Circle  
Derby, Kansas 67037

*Gas Detection Trailer & Internet/Phone Communications*



**NOTICE!!!!**  
**WSU GEOLOGY CLUB**  
**& Papa John's Pizza**

Papa John's offered WSU student organizations an opportunity to raise monies for their organizations.

The **WSU Geology Club** is participating  
And **YOU** can help them!

When ordering pizza from Papa John's,  
Use this code: **WSU004**  
(those are zero's, not letter O)

With this code, the customer will receive 40% off their entire online order and WSU's AAPG Student Chapter will receive 10% of the money spent on the order.

**Eating pizza tonight?**  
**Let's help WSU Geology Club!**

Monies raised will be used towards gas money to travel to local schools when they promote the geosciences to grade schools, registration costs for workshops, seminars and AAPG Student Expos, and social and academic events like an upcoming "Lunch and Learn" series next fall.

**We Invite You  
To join**

**Kansas  
Geological  
Foundation**

**\$50.00 membership is  
tax deductible**

**Call 316-265-8676**

**Or send checks to:  
Kansas Geological Foundation  
212 N. Market, Ste. 100  
Wichita, KS 67202**

**The Following Are For Sale**

**Kansas Completion Cards:**  
Several sets (call for more information)

**Oklahoma Completion Cards**

**New Mexico Completion Cards**

**North Dakota Completion Cards**

**Utah Completion Cards**

**Microfiche Electric Logs**

**Kansas  
Oklahoma  
Texas**

**Geological Office Furniture:**

- 8-drawer completion card cabinets
- 7-drawer cabinets
- Map cabinets—metal—2 available
- Map racks—different sizes

**Call: 316-265-8676**  
**Ask for Ted**

## Missing reference books and periodicals from the KGS Resource Room

I'm channeling the spirit of my dear departed friend Bob Slamal. Bob was determined to organize all of the text books, survey bulletins and various publications that are in the resource room at the KGS Library. He spent countless hours on his own time to accomplish this task. Many years back, before his untimely death, he instituted a checkout policy for these materials. Cards were filled out with the borrower's name and publication, then placed in an envelope on the shelf where the publication was removed.

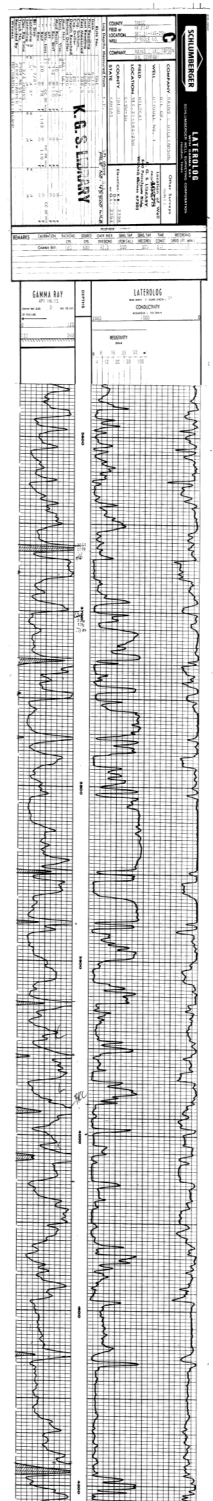
Recently I noticed many of these envelopes on the shelves and began to peruse them. Many items have been gone for years. I'm asking that each member check your reference materials for these missing items. I'm sure they will be marked as KGS property.

Bob's spirit is strong and determined. In the March/April issue of the Bulletin, I will publish both the missing item as well as the borrower's name. I know that we all just flat out forget stuff, so the listing of names will just be a reminder for those borrowers to search for the items.

Please help me in this endeavor.

Wes Hansen  
Editor

*The KGS Library is pleased to announce a new service*



Creating  
LAS files  
from our logs  
or yours

**\$20.00 per  
curve!!**

Quick  
turn-around

Send us your log file  
or tell us which of  
ours you would like  
converted.

**316-265-8676**

The Kansas Geological Society maintains its ownership and copyright when converting library log files to LAS

# Robert F. Walters Digital Library

The most complete source for Kansas data

## Database updated nightly

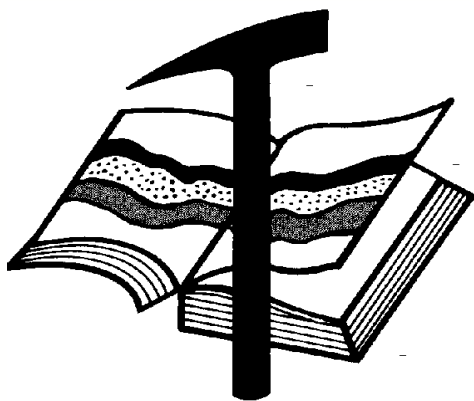
Day or Night

You can get to the data as you need it

[www.kgslibrary.com](http://www.kgslibrary.com)

To Join: call 316-265-8676

API No.	County	Sec	Twp	Rge	Operator	Lease Name	Well No.	Spd	Location	N/S	E/W	Spd	Completion	Depth	E/B	E/C	E/L	Status
15-03-0002	COMANCHE	06	31S	15W	GULF OIL / SINGLAR OIL / CARTER OIL	GALLUP-ROBBING												
15-03-0051	COMANCHE	36	31S	15W	MESSEMAN-EDENHART OIL CO	SCHLETTE EST B												
15-03-0054	COMANCHE	15	31S	15W	F. K. JOHNSON	ROBEINS												
15-03-0059	COMANCHE	23	31S	15W	BARBARA OIL CO	ROBEINS UNIT												
15-03-0060	COMANCHE	23	31S	15W	BARBARA OIL CO	ROBEINS B												
15-03-0061	COMANCHE	23	31S	15W	BARBARA OIL CO	ROBEINS												
15-03-0013	COMANCHE	36	31S	15W	INTER-SEA SERVICE													
15-03-0001	COMANCHE	14	31S	15W	BARBARA OIL CO													
15-03-0002	COMANCHE	30	31S	15W	BARBARA OIL CO													



# Kansas Geological Foundation

*Web Site: [www.kgfoundation.org](http://www.kgfoundation.org)*

**212 North Market  
Wichita, Kansas 67202**

A not-for-profit educational and scientific corporation

## **GOALS:**

- promote geology and earth science
- preserve geological records
- establish memorials and endowments
- support field trips and seminars
- financial aid and grants to students

**PLEASE HELP SUPPORT THE FOUNDATION**

## **Kansas Geological Foundation Services**

The Kansas Geological Foundation provides the following services as a part of the organization's commitment to educate the public regarding earth science.

### **Speaker's Bureau**

A list of speakers available to talk about various aspects of geology may be obtained by contacting Janice Bright at the KGS Library, 265-8676. This service is free to the public.

### **DVD/Videotape Library**

The KGF maintains a DVD & videotape library focused primarily on the various fields of earth science. These tapes may be checked out without charge by the public. To obtain a list of tapes, please contact the KGS Library, 212 N. Market, Ste. 100, Wichita, KS 67202, or call Janice Bright at 265-8676.

The Kansas Geological Foundation was founded in March, 1989 as a not-for-profit corporation under the guidelines of section 501(c)(3) of the tax code to provide individuals and corporations the opportunity to further the science of geology. It is dedicated to providing charitable, scientific, literary and educational opportunities in the field of geology for the professional geologist as well as the general public.

KGF can receive in-kind donations through which the donor may receive a tax deduction. Of equal importance, the KGF provides the financial resources to sort, process and file this data at the KGS library. If you have a donation to make, please contact the KGF at 265-8676.

Your tax-deductible membership donation helps to defray the cost of processing donations and to support public education programs about the science of geology. Annual membership begins at \$50.00 per year. Donations of \$100.00 or more are encouraged through the following clubs:

<b>Century Club</b>	\$ 100 to \$ 499
<b>\$500 Club</b>	\$ 500 to \$ 999
<b>Millennium Club</b>	\$1000 to \$5000
<b>President's Club</b>	\$5000 and over



# *Kansas Geological Foundation*

## *Cornerstone*

### *Kansas Geological Foundation News*

#### **KGF Spring 2017 Scholarship Recipients**

Lauren Haga of University of Kansas \$500—Knighton Scholarship  
Adam Lane and Ryan Keast of Kansas State University -  
\$500 each—Robert Cowdery Scholarships

#### Other Recipients ;

Nicholas Hixon - Fort Hays State University - \$500

Luke Rijfkogel - Fort Hays State University - \$500

Amy Olson - University of Kansas - \$500

Sarah Lamm - Kansas State University - \$500

#### **2017 KGF Grants**

No grant requests were received

#### **Educator/Teacher Award for 2016**

Dr. P. Allen MacFarlane was the only nominee from KESTA - \$1,000 cash award plus  
2 meals at the KGS Annual Banquet

# *Kansas Geological Foundation News*

Students: The KGF awards scholarships each December and May. Check with your department chairs for applications. You must submit complete applications by the deadline.

Grants to help with research on Kansas related geology are also considered for aid.

## **Kansas Geological Foundation Video / DVD Collection**

The KGF has an extensive collection of videos available for check-out at no charge.

Only pay for shipping back.

These are ideal for classroom or general public viewing.

See the web for titles & descriptions  
[www.kgfoundation.org](http://www.kgfoundation.org)

Call 316-265-8676

Ask for Janice to check out videos

**Robert F. Walters Digital Library**  
The most complete source for Kansas data  
**Database updated nightly**  
**Day or Night**  
**You can get to the data as you need it**  
[www.kgslibrary.com](http://www.kgslibrary.com)  
**To Join: call 316-265-8676**

The advertisement features a background image of a wooden barn in a rural landscape under a blue sky with clouds. In the foreground, a computer monitor displays a complex geological data interface with various tables, maps, and search options. The text is overlaid on the top half of the image in blue and black fonts.

12 Drilling Rigs  
To depth of 8,500 ft.



WESTERN KANSAS  
SOUTHERN NEBRASKA  
EASTERN COLORADO

For contract information contact:  
**Blaine Miller**  
Drilling Manager

316-858-8607 (Direct)  
316-267-3241 (Main)

250 N. Water, Ste. 300  
Wichita, KS 67202

**DUKE**  
**DRILLING COMPANY**  
**ROTARY DRILLING CONTRACTOR**

620 Hubbard PO Box 823  
Great Bend, KS 67530  
Phone 620-793-8366

100 S. Main, Ste. 410,  
Wichita, KS 67202  
Phone 316-267-1331  
Fax 316-267-5180



2D & 3D Vibroseis Acquisition  
ARAM\*AIRES Seismic Recording System

1600 Broadway, Suite 1660 • Denver, CO 80202-4915  
(303) 592-5220 • info@lockhartgeo.com  
for complete information go to: www.lockhartgeo.com

Great Bend Ness City Medicine Lodge  
(620) 793-5861(785) 798-3843 (620) 886-5926



GREAT BEND 793-5861 NESS CITY 798-3843  
MEDICINE LODGE 886-5926  
Russell Oakley  
(785) 483-2627 (785) 672-3452

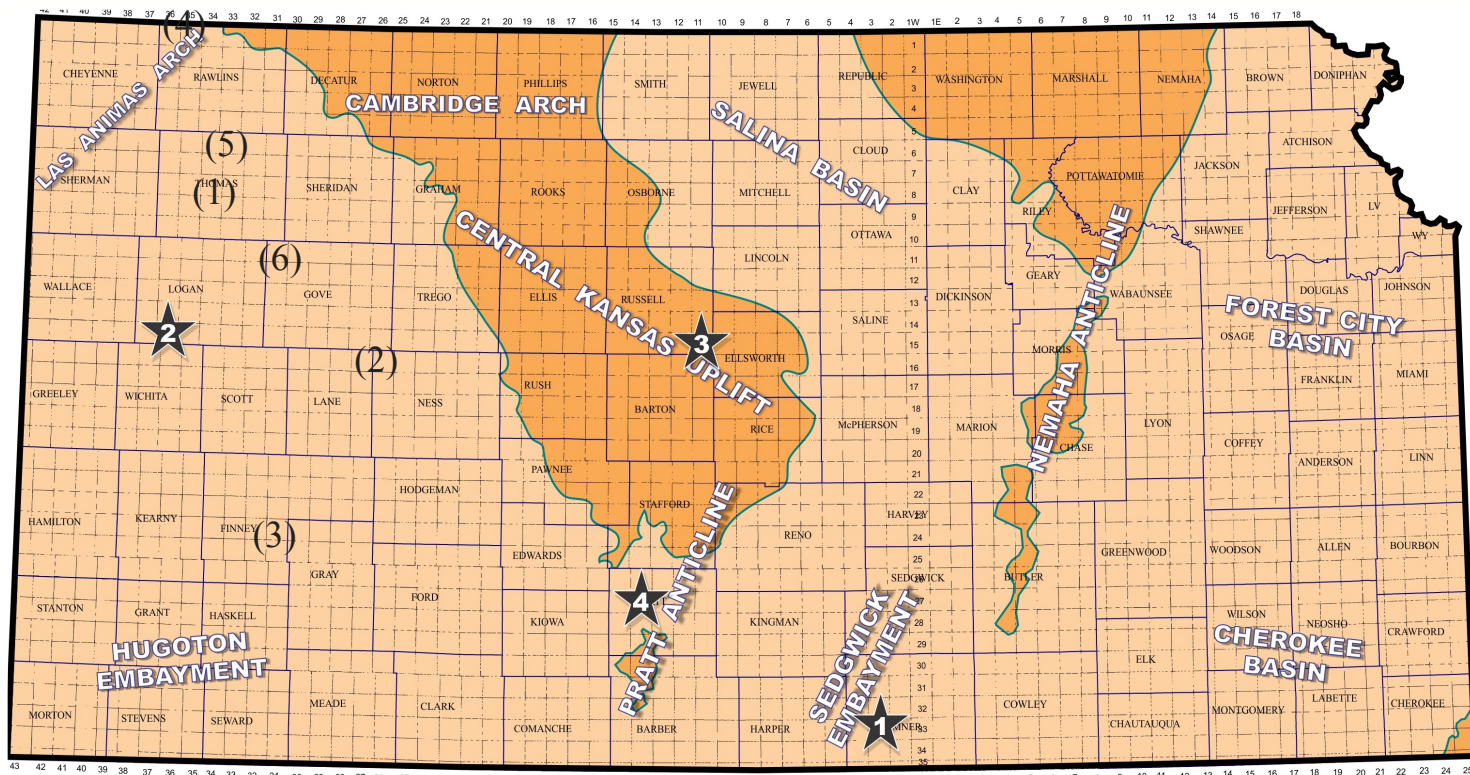
**AAPG Needs You!**  
**Professional geoscientists, share your world!**

The Mid Continent Section has **17 AAPG Student Chapters**, but only **3 Visiting Geoscientists**...which makes it almost impossible to have a professional geoscientist visit to each school at least once a year or even once every two years. The aim of AAPG's program is to give students a flavor of a professional life in energy resources. It also hopes to encourage dialog between industry and academia.

To be a Visiting Geoscientist bearing the AAPG flag, you are asked to have at least 5 years of experience and make at least one visit per year to a university. It can be a school with an AAPG Student Chapter, or a college/university without one. Your choice.

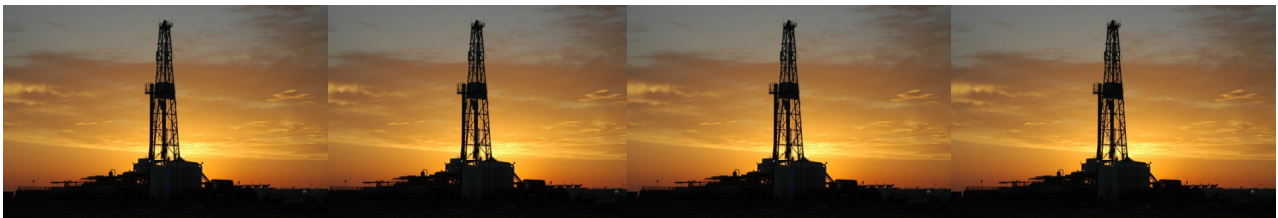
The Mid Continent schools with Student Chapters are: Missouri University, Fort Hays State University, Iowa State University, Kansas State University, Missouri State University, University of Nebraska, Northwest Missouri State University, Oklahoma State University, University of Oklahoma, University of Arkansas, University of Iowa, University of Kansas, University of Missouri, Columbia University of Tulsa and Wichita State University.

Contact Robbie Gries, co-Chair VGP committee, Denver, if you are interested in learning more. [rrgries@aol.com](mailto:rrgries@aol.com)



- 1). Slawson Exploration Company, Inc., Oklahoma City (OK), has successfully completed the #2-14 Kistler to establish a new unnamed oil field in Thomas County. The wildcat well is producing an unknown amount of crude from the Marmaton formation at site located in the NE/4 of section 14- T9s- R34W. The well found oil deposits over two miles from the Herren Field (2008) or seven miles southwest of the town of Colby. Rotary total depth stopped at 4,800 ft in the Mississippian formation.
- 2). Palomino Petroleum, Inc. of Newton (KS) is pumping 60 bbls of oil and 50 bbls of water per day at the #1 ABS spotted in the NE/4 of section 18- T17s- R26W in Ness County. The 4,652-ft deep wildcat well is producing commingled oil from the Lansing- Kansas City (LKC), Marmaton and Mississippian formations. The new reserves lie over one mile northeast of established production in the Repshire East Field - a field Palomino Petroleum discovered in 2014 with LKC and Marmaton pay. The newly named Three Creeks pool is located four miles south and three miles west of Utica, Kansas.
- 3). American Warrior, Inc., Garden City (KS), has a new oil discovery in Finney County at their #1-29 O'Brate – FLB well located in the NW/4 of section 29- T25s- R31W, about four and one-half miles southwest of the town of Pierceville. The wildcat well had initially targeted the Mississippian (ST Louis) formation for exploration. The Mississippian, upper Marmaton and Pawnee zones were all perforated and tested. Closest known production nearby lies in the Pierceville Township pool (2014) which American Warrior also discovered with Marmaton oil production. The well was drilled to a total depth of 5,050 ft. The new oil field has been named Deadwood.

- 4). Prospect Oil & Gas Corporation, Russell (KS), has discovered new Lansing-Kansas City (LKC) oil reserves at the #1 Rose - Sis Unit in Rawlins County. Discovery was made in the NE/4 of section 12- T1s- R35W, about twelve miles north and two miles east of Beardsley, Kansas. Operator drilled the well to a total depth of 4,310 ft. The new Sis pool is located over one mile northeast of established LKC production in the Cahoj West Field (1962).
- 5). Independent oil producer John O. Farmer, Inc. of Russell (KS) has discovered new Cherokee oil reserves at a wildcat well in Thomas County. The #1 Schroeder Unit, spotted in the NW/4 of section 14- T6s - R33W, was drilled to a total depth of 4,600 ft. It is producing an unknown amount of oil from the Cherokee Limestone. The new field has been named Albear South. Discovery site lies over three-quarters mile south of known production in the Albear Field (2002), about nine miles north and three miles east of the town of Colby. The Albear pool has also produced oil from the Lansing-Kansas City and Marmaton formations.
- 6). King Oil Operations, Ellis (KS), has completed the #1-19 Singer to establish a new productive area in Gove County. The Logo North pool opener is producing 22 bbls of oil and 1 bbl of water per day from the Lansing-Kansas City formation. The well was drilled to a total depth of 4,663 ft in the SE/4 of section 19- T12s- R31W, nearly nine miles south and nine miles west of the town of Grinnell. Closest known production in the area lies over one and one-half miles away.



# Kansas Geological Foundation Memorials

KGS Member	Date Deceased	Memorial Est.	KGS Member	Date Deceased	Memorial Est.
Dan Bowles	09/89	1990	Claud Sheats	02/02	2002
John Brewer	10/89	1990	Merle Britting	2002	2002
George Bruce	08/89	1990	Harold Trapp	11/02	2002
Robert Gebhart	01/90	1990	Donald M. Brown	11/02	2003
Ray Anderson, Jr.	11/90	1990	Elwyn Nagel	03/03	2003
Harold McNeil	03/91	1991	Robert Noll	09/03	2003
Millard W. Smith	08/91	1991	Benny Singleton	09/03	2003
Clinton Engstrand	09/91	1991	Jay Dirks	2003	2003
M.F. "Ted" Bear	10/91	1991	J. Mark Richardson	02/04	2004
James & Kathryn Gould	11/91	1991	John "Jack" Barwick	02/01	2004
E. Gail Carpenter	06/91	1993	Richard Roby	03/04	2004
Benton Brooks	09/92	1992	Ruth Bell Steinberg	2004	2004
Robert C. Armstrong	01/93	1993	Gordon Keen	03/04	2004
Nancy Lorenz	02/93	1993	Lloyd Tarrant	05/04	2004
Norman R. Stewart	07/93	1993	Robert J. "Rob" Dietterich	08/96	2004
Robert W. Watchous	12/93	1993	Mervyn Mace	12/04	2004
J. George Klein	07/94	1994	Donald Hoy Smith	04/05	2005
Harold C.J. Terhune	01/95	1995	Richard M. Foley	06/05	2005
Carl Todd	01/95	1995	Wayne Brinegar	06/05	2005
Don R. Pate	03/95	1995	Charles B. Moore	09/96	2005
R. James Gear	05/95	1995	Jack Heathman	05/06	2006
Vernon Hess	06/95	1995	Charles Kaiser	09/06	2006
E. K. Edmiston	06/95	1995	Rod Sweetman	08/06	2006
Jack Rine	07/95	1995	Karl Becker	10/06	2006
Lee Cornell	08/95	1995	Frank Hamlin	10/06	2006
John Graves	10/95	1995	Marvin Douglas	12/06	2006
Wilson Rains	10/95	1995	Robert W. Hammond	04/07	2007
Heber Beardmore, Jr.	09/96	1996	Eldon Frazey	04/07	2007
Elmer "Lucky" Opfer	12/96	1996	Pete Amstutz	05/07	2007
Raymond M. Goodin	01/97	1997	Charles Spradlin	05/07	2007
Donald F. Moore	10/92	1997	Donald R. "Bob" Douglass	09/07	2007
Gerald J. Kathol	03/97	1997	Vincent Hiebsch	11/07	2007
James D. Davies	08/88	1997	Glen C. Thrasher	03/08	2008
R. Kenneth Smith	04/97	1997	Peg Walters	06/08	2008
Robert L. Dilts	05/97	1997	Theodore "Ted" Sandberg	07/08	2008
Delmer L. Powers	06/72	1997	James Ralstin	11/08	2008
Gene Falkowski	11/97	1997	Earl Brandt	04/09	2009
Arthur (Bill) Jacques	01/98	1998	Walter DeLozier	05/09	2009
Bus Woods	01/98	1998	Don D. Strong	01/10	2010
Frank M. Brooks	03/98	1998	John Stone	02/10	2010
Robert F. Walters	04/98	1998	Craig Caulk	03/10	2010
Stephen Powell	04/98	1998	Joseph E. Moreland, Jr.	03/10	2010
Deane Jirrels	05/98	1998	Gene Garmon	03/10	2010
William G. Iversen	07/98	1998	James F. Dilts	05/10	2010
Ann E. Watchous	08/98	1998	Jerry Pike	05/10	2010
W.R. "Bill" Murfin	09/98	1998	Donald Hollar	06/10	2010
Donald L. Hellar	11/98	1998	Delbert Costa	08/10	2010
Joseph E. Rakaskas	01/99	1999	John Tanner	08/10	2010
Charles W. Steincamp	02/99	1999	William (Bill) Owen	09/10	2010
Robert and Betty Glover	10/96	1998	Harold (Hal) Brown	10/10	2010
Howard E. Schwerdtfeger	11/98	1999	Edmund G. Lorenz	11/10	2010
W. W. "Brick" Wakefield	03/99	1999	Thomas E. Black	05/11	2011
V. Richard Hoover	01/00	2000	Wayne E. Walcher	07/11	2011
Warren E. Tomlinson	01/00	2000	Henry F. Filson	07/11	2011
James A. Morris	01/00	2000	Thomas Ray	07/11	2011
Eric H. Jager	03/00	2000	Edgar E. Smith	09/11	2012
Kenneth W. Johnson	03/00	2000	Marilyn Messenger	06/13	2013
Dean C. Schaake	03/00	2000	Micheal Mitchell	09/13	2013
Fred S. Lillibridge	05/00	2000	Orvie Howell	11/13	2013
Jerry A. Langrehr	07/00	2000	James Thompson	11/13	2013
Clark A. Roach	07/00	2000	Dick Rowland	09/13	2014
Floyd W. "Bud" Mallonee	10/00	2000	Robbie Thompson	12/13	2014
Ralph W. Ruuwe	09/00	2000	Kris Kennedy	04/14	2015
Robert L. Slamal	02/01	2001	Annette Hedke	02/15	2015
Jerold E. Jespersen	06/01	2001	James Devlin	04/15	2015
William A. Sladek	06/01	2001	Robert Gensch	09/15	2015
Harlan B. Dixon	06/01	2001	Jerald Rains	05/16	2016
Edward B. Donnelly	08/01	2001	Max Houston	05/16	2016
Richard P. Nixon	02/02	2002			
Robert W. Frensley	12/01	2002			
Gerald W. Zorger	01/02	2002			
Don L. Calvin	03/02	2002			

# Robert F. Walters Digital Library

The most complete source for Kansas data

## Database updated nightly

Day or Night  
You can get to the data as you need it

[www.kgslibrary.com](http://www.kgslibrary.com)

To Join: call 316-265-8676

The screenshot displays the Robert F. Walters Digital Geological Library website. At the top, there are search filters for Section, API Number, County, Operator, Lease Name, Depth, Well No., and Spot. Below the filters is a table of well data with columns for API No., County, Sec, Twp, Rge, Operator, Lease Name, Well No., Spot, Location, N/S, E/W, Spud, Completion, Depth, E/H, E/O, E/I, and Status. The table lists several wells in Comanche County, including GULLF OIL / SINCLAIR OIL / CARTER OIL, SCHLETTE EST B, ROEBENS, ROEBENS UNIT, ROEBENS B, ROEBENS, INTER-SEA SERVICE, BARBARA OIL CO, and BARBARA OIL CO.

Below the table, there are several preview windows. One window shows a 'Completion Card - IOG' for well 15-03-10002, listing completion details like '2 pages', '10 1512744', and '15-03-10002'. Another window shows a 'Drill Stem Test' for well 15-03-10002. A third window shows a 'Well Log' for well 15-03-10002, including a table of logs (e.g., BR 1 M, LANS, CKE SA, MI SS, V10, TD) and a detailed log section for 'BARBARA OIL CO' with 'Contr. PICKRELL' and 'E. 2050R Comm. 7'. The log section includes 'Tops', 'Company', 'Date', 'Ticet No.', 'Test Data', and 'Remarks'. The 'Test Data' section includes 'Tensil From 4980' to 4910', 'Hydraulic Mud Pressure-Initial (x)', 'Flow Pressure-Initial (x)', 'Bottom Hole Pressure-Initial (x)', 'Test Open - - - Hr. 50 Min.; Shut-in-Initial - - - Hr. 30 Min.', 'Closes; Surface - 5/8" Bottom - open Fluid Cushion: Type: Recovery: 100% Gas cut mod.', and 'SURFACE DATA: Good. Shows with no gas surface...'. The 'Remarks' section includes 'LATERLOG 3... GAMMA RAY - SENS = 400 TC = 2...'. The log also features the 'K & S LIBRARY' logo and 'LATEROLOG SURVEY' branding.

**CHANGE SERVICE REQUESTED**

KGS BULLETIN  
 January - February 2017

## January 2017

Sun	Mon	Tue	Wed	Thu	Fri	Sat
1	2	3 Tech Meeting	4	5	6	7
8	9	10	11 KGS Board	12	13	14
15	16	17 Tech Meeting	18	19	20	21
22	23	24 Tech Meeting	25	26	27 KGS Annual Banquet	28
29	30	31				

## February 2017

Sun	Mon	Tue	Wed	Thu	Fri	Sat
			1	2	3	4
5	6	7 Tech Meeting	8 KGS Board	9	10	11
12	13	14	15	16	17	18
19	20	21 Tech Meeting	22	23	24	25
26	27	28				